

Click here to make your own copy of this template

# MWHS JEOPARDY!

Template by Eric Curts

[ericcurts@gmail.com](mailto:ericcurts@gmail.com) - [www.ericcurts.com](http://www.ericcurts.com)

[twitter.com/ericcurts](https://twitter.com/ericcurts) - [plus.google.com/+EricCurts1](https://plus.google.com/+EricCurts1)



This slideshow is licensed under a Creative Commons Attribution Non-Commercial 3.0 United States license. For more information about this license see <http://creativecommons.org/licenses/by-nc/3.0/> (In short, you can copy, distribute, and adapt this work as long as you give proper attribution and do not charge for it.)

# MWHS Jeopardy

Final Jeopardy

Where did this happen	Our colorful past	Potpourri	Fishing & Guides	Business Trivia
\$100	\$100	\$100	\$100	\$100
\$200	\$200	\$200	\$200	\$200
\$300	\$300	\$300	\$300	\$300
\$400	\$400	\$400	\$400	\$400
\$500	\$500	\$500	\$500	\$500

\$100 answer

Modern business that  
occupies the source of the  
old “noon siren”.

[Click to see answer](#)



# \$ 100 question

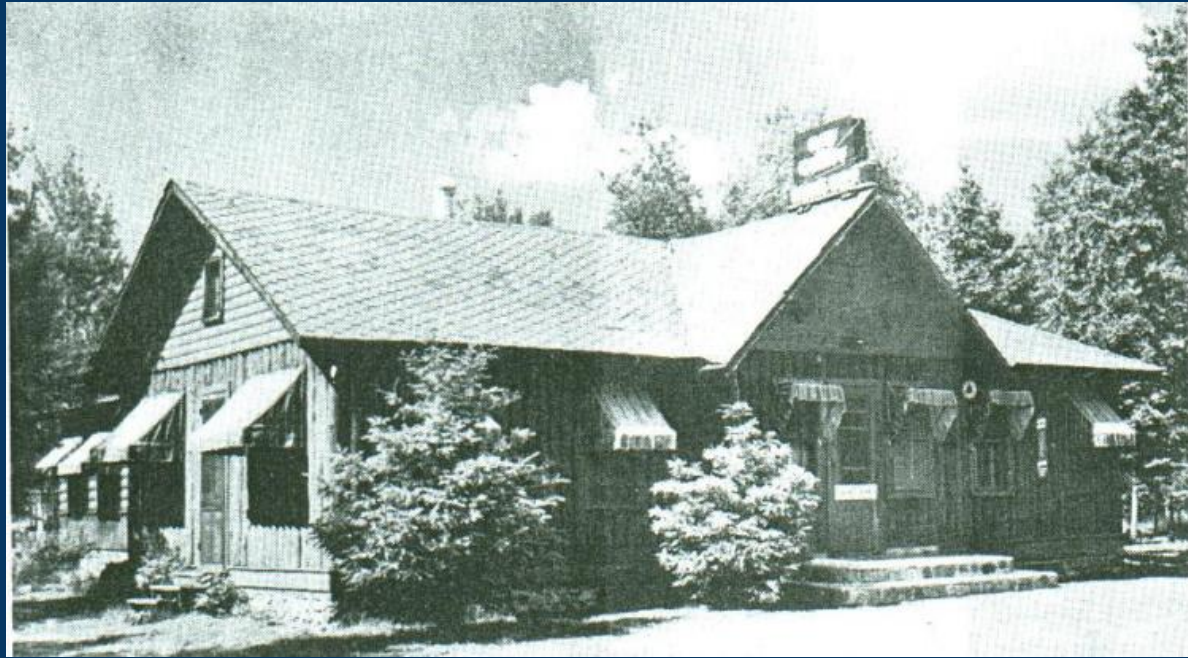


## GT Auto Body

[Click to return to Jeopardy Board](#)



\$200 answer



This structure ultimately  
burned down and was  
located near the junction of  
this river and creek?

[Click to see answer](#)



\$200 question



Manitowish River  
and  
Circle Lily Creek

[Click to return to Jeopardy Board](#)





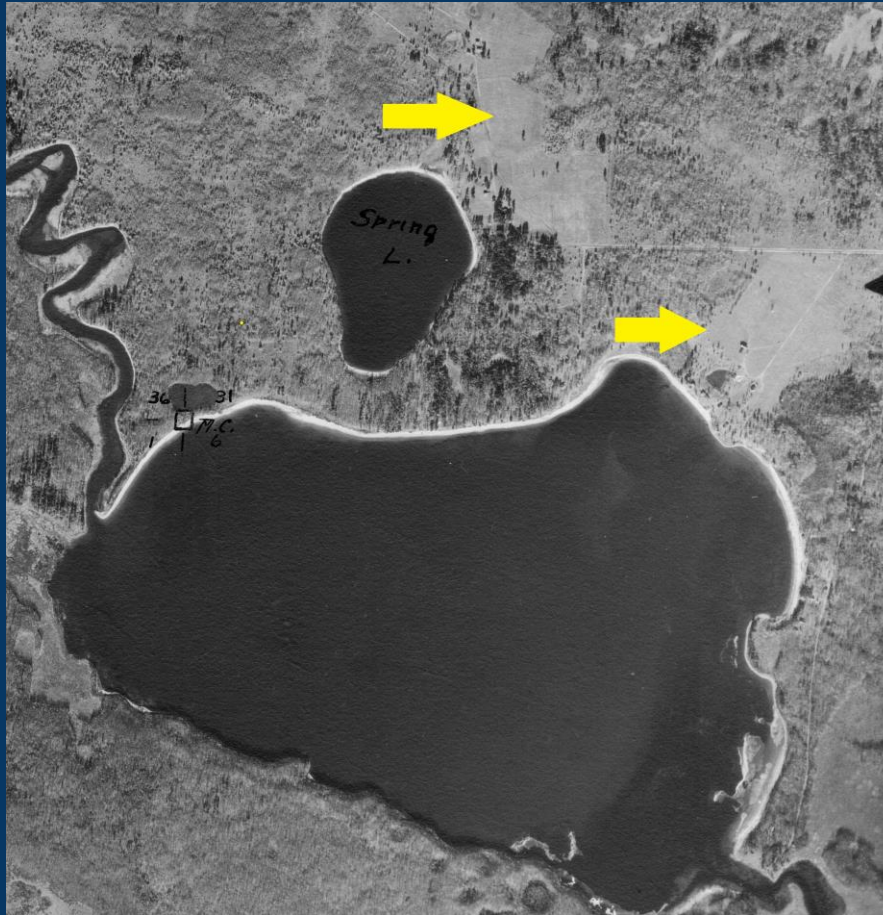
\$300 answer

Lake where the Bakken family ran two resorts and farmed.

[Click to see answer](#)



# \$300 question



## Wild Rice

[Click to return to Jeopardy Board](#)





\$400 answer



Town road or modern business  
that relates to the image.

[Click to see answer](#)



\$400 question



Anglers or Tower Road

[Click to return to Jeopardy Board](#)



\$500 answer

Site of LaPorte's first  
grocery store.

(Please write the modern  
owners of the building for  
your answer)

[Click to see answer](#)



# \$500 question



## Coldwell Banker Realty

[Click to return to Jeopardy Board](#)



\$100 answer

“Home” of the only fatality  
of the FBI shoot out at Little  
Bohemia.

[Click to see answer](#)





\$ 100 question



CCC Camp Mercer  
Or  
CCC Camp (660<sup>th</sup> Company)

[Click to return to Jeopardy Board](#)





\$200 answer

Gangster that killed an FBI agent at Koerner's Resort.

[Click to see answer](#)



# \$200 question



## Baby Face Nelson

[Click to return to Jeopardy Board](#)



\$300 answer

MW adult entertainment  
establishment near Vance  
Lake

[Click to see answer](#)



# \$300 question



## 30 30 Club

[Click to return to Jeopardy Board](#)



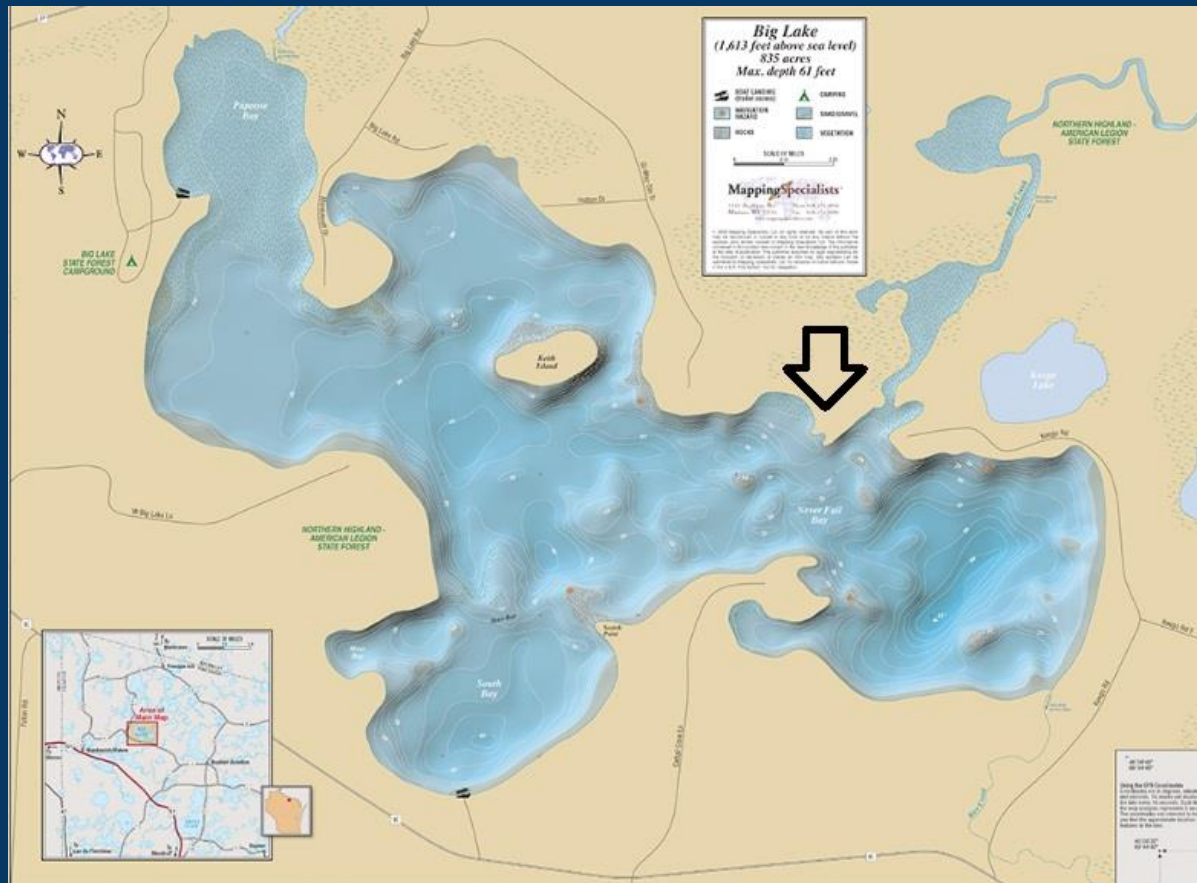
\$400 answer

Location (lake) of 1920  
moonshiner murder and  
subsequent shootout

[Click to see answer](#)



# \$400 question



## Big Lake

[Click to return to Jeopardy Board](#)





\$500 answer

Infamous “underground” bar  
or establishment that  
operated for more than a  
decade out of a cranberry  
warehouse.

[Click to see answer](#)



# \$500 question

**CI or WI  
CLUB**

I \_\_\_\_\_ am an official  
Member of the M & J Body Chug It or Wear It Club.  
I have successfully ( ☐ Chugged ☐ Wore) enough  
beer to be considered drunk and disorderly by the  
M & J Body Book of World Record.

\_\_\_\_\_ M \_\_\_\_\_ Witness By \_\_\_\_\_ J \_\_\_\_\_  
Blind Man The Professor  
x \_\_\_\_\_ 19 \_\_\_\_\_ x \_\_\_\_\_

## M & J Body

[Click to return to Jeopardy Board](#)



\$100 answer

Name one of the two  
businesses that operated on  
the Tower Bar property  
before it became Anglers?

(Tower Bar is not a correct response)

[Click to see answer](#)



# \$100 question

Liquor license returned to town

In other developments, Patterson reported to the board that a liquor license had been returned to the town by restaurant leasee Robert Grove following the recent closure of casual dining restaurant Changing Waves Pub and Grill, 163 Hwy. W.

Changing Waves  
Or  
The Fireplace Inn

[Click to return to Jeopardy Board](#)



\$200 answer

Lake on MW chain that is in 3  
different townships.

[Click to see answer](#)



# \$200 question



of the University of Wisconsin System

## Wild Rice

[Click here to return to Jeopardy Board](#)





\$300 answer

Town road nearest to the old  
(unofficial) MW garbage  
dump on the eastern part of  
town.

[Click to see answer](#)



# \$300 question



## North Townline Road

[Click to return to Jeopardy Board](#)



\$400 answer

Manitowish Waters claims to be the home this game fish.

[Click to see answer](#)



\$400 question

# Tiger Musky



## \$500 Answer

Name of the invasive species  
that cleared most of the  
weeds out of the MW Chain  
in the 1960's and 70's.

[Click to see answer](#)



\$500 question



Rusty Crayfish

[Click to return to Jeopardy Board](#)





\$500 answer

Ojibwa fishing guide who  
often guided guests from  
Voss' Birchwood Lodge.

[Click to see answer](#)



# \$100 question



## Chief DeCoteau

[Click to return to Jeopardy Board](#)



\$200 answer

The ladies in  
the image are  
attempting to  
land a ...



[Click to see answer](#)



\$200 question

Musky  
Or  
Sturgeon

[Click to return to Jeopardy Board](#)



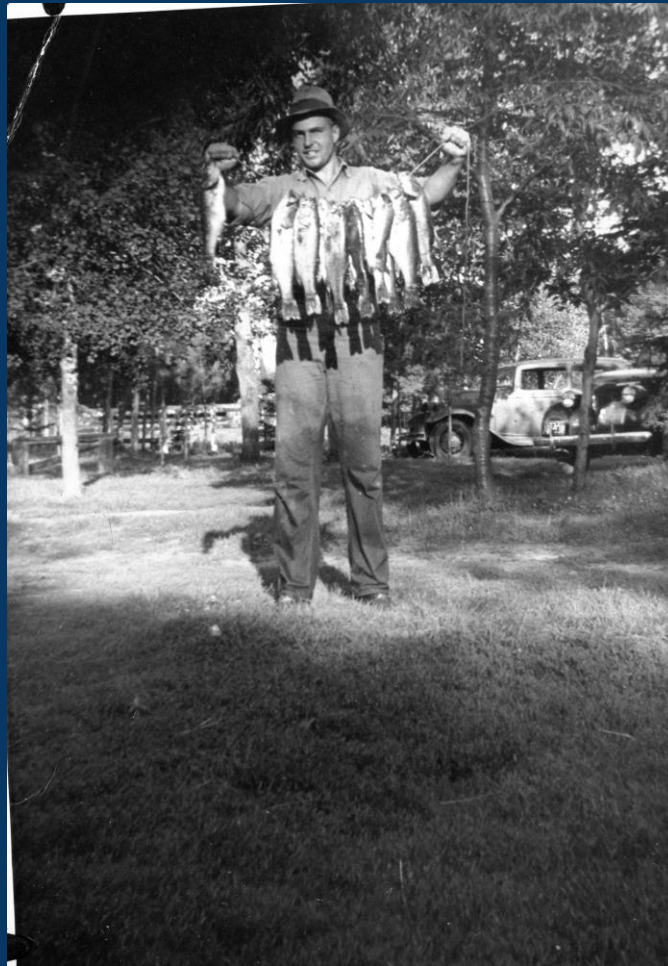
\$300 answer

World famous musky guide  
with 3/4 century of service.  
Also operated an Island Lake  
resort and created  
specialized casting baits.

[Click to see answer](#)



# \$300 question



Dick Sleight

[Click to return to Jeopardy Board](#)





\$400 answer

MW family that have  
generational guides and ran  
The Junction bait shop.

[Click to see answer](#)



# \$400 question



McClellan

[Click to return to Jeopardy Board](#)



\$500 answer

MW family leading the efforts to build MW chain walleye populations.

[Click to see answer](#)



# \$500 question



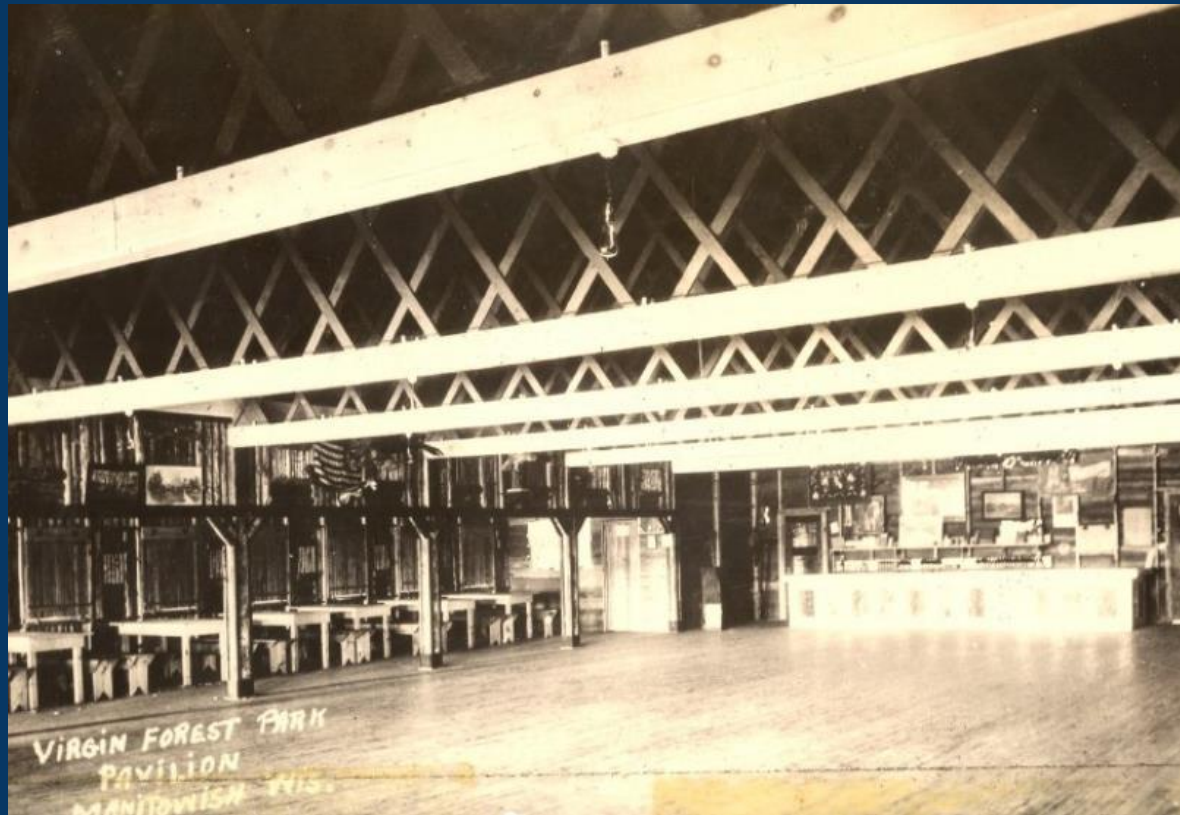
Kramer

[Click to return to Jeopardy Board](#)



\$100 answer

Location of the Loveless  
dance pavilion.



See answer



# \$100 question



## Alder Lake

[Click to return to Jeopardy Board](#)





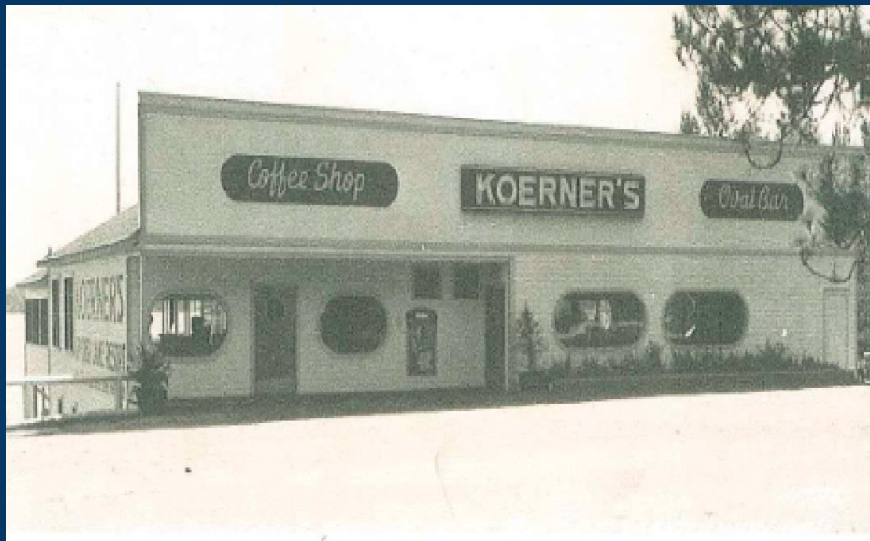
\$200 answer

Koerner's Bar that overlooked Manitowish Lake, that ultimately burned in the 1960's.

[Click to see answer](#)



# \$200 question



## Oval bar

[Click to return to Jeopardy Board](#)



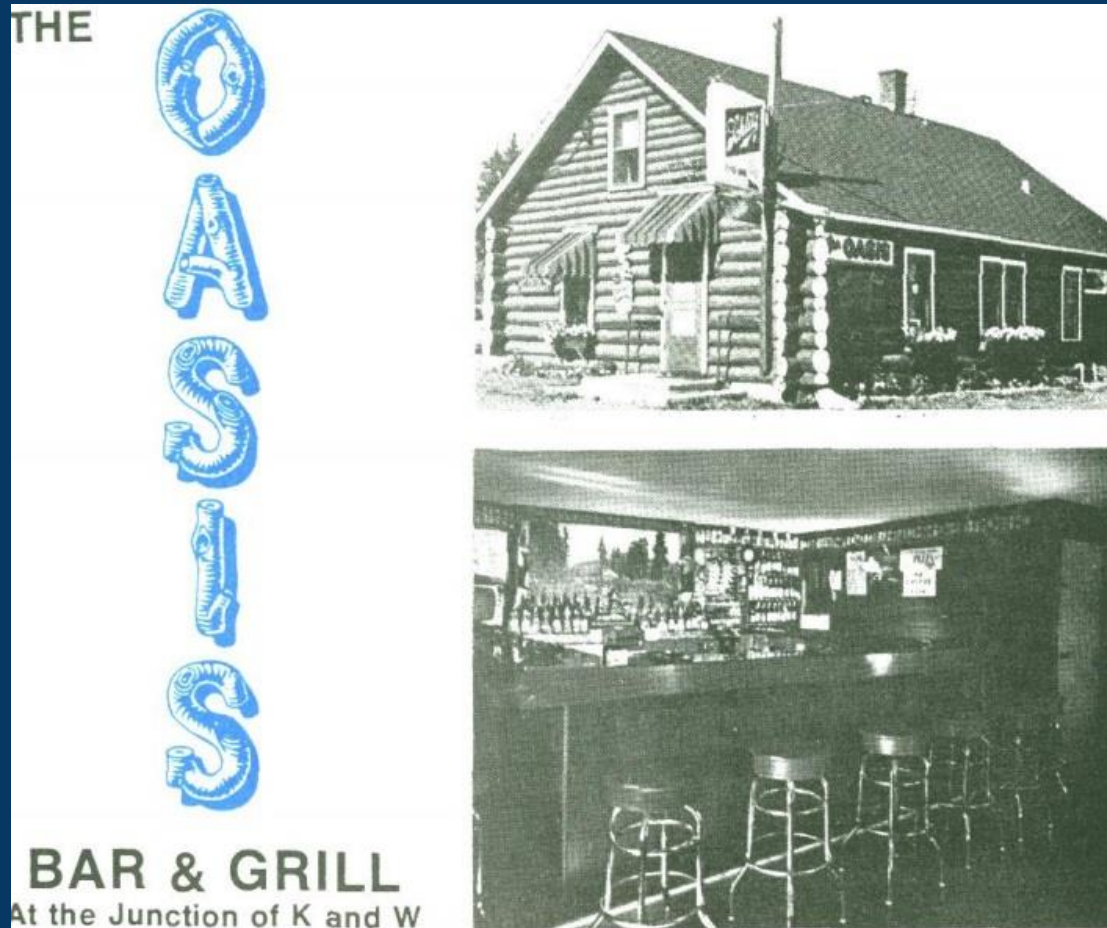
**\$300 answer**

The unique feature above the entrance of the Oasis Bar near the peak of the roof.

[Click to see answer](#)



# \$300 question



## Arrows

[Click to return to Jeopardy Board](#)



\$400 answer

Resort and bar that served  
both drinks and firearms.

[Click to see answer](#)



# \$400 question



Thiesen's Twin Pine or Twin  
Pine

[Click to return to Jeopardy Board](#)





\$500 answer

Current bar that was also  
the location of MW's first  
Zoo.

[Click to see answer](#)



# \$500 question



## Howling Dog

[Click to return to Jeopardy Board](#)



# FINAL JEOPARDY!

So, you think you know MW  
lakes...

Click to see answer



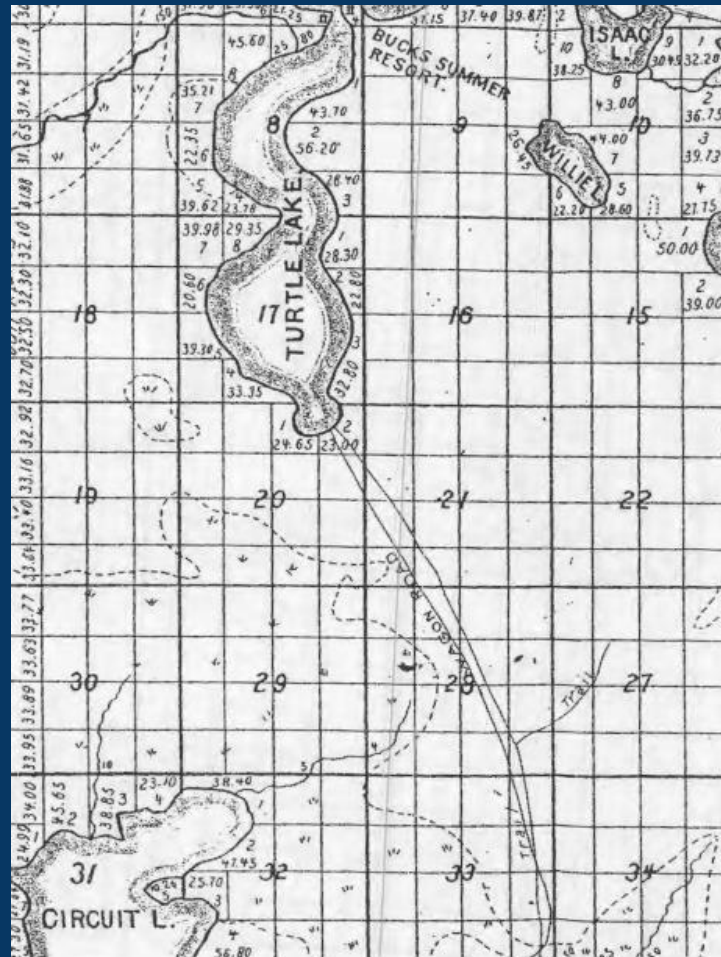
## Final Jeopardy

MW border lake, sometimes called Circuit Lake, due to it's trapper trails. Cal LaPorte delivered groceries to this lake's boat landing for a hermit who lived in an abandoned logging camp.

[Click to see answer](#)



# Final Jeopardy question



Circle Lily

[Click to return to Jeopardy Board](#)

